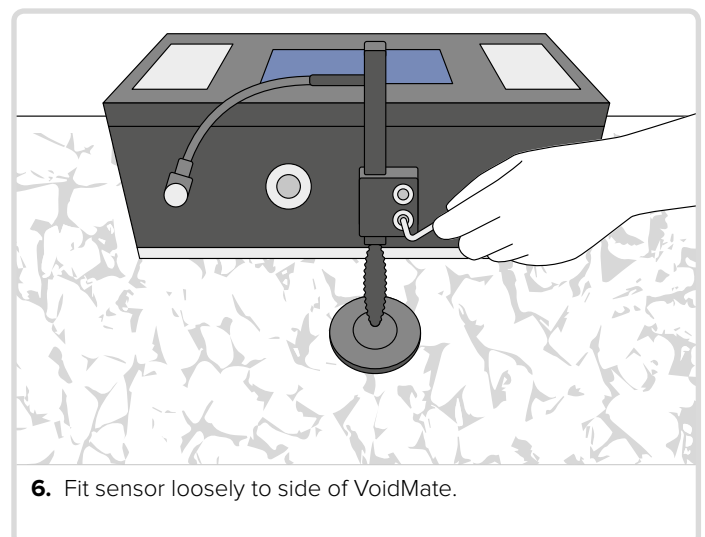
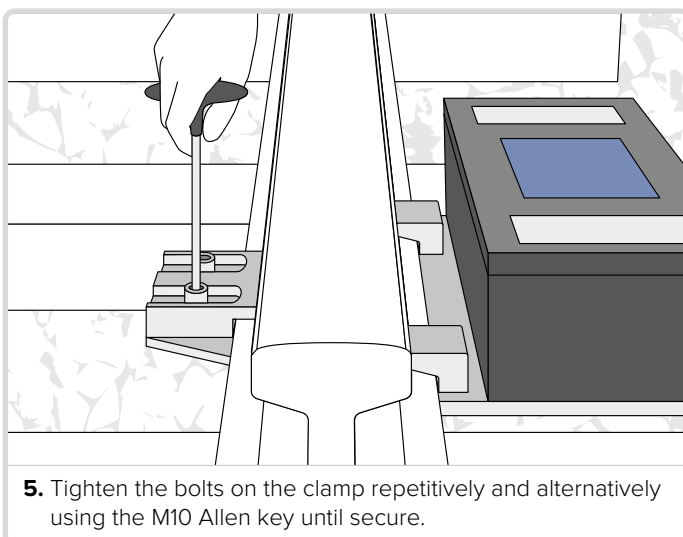
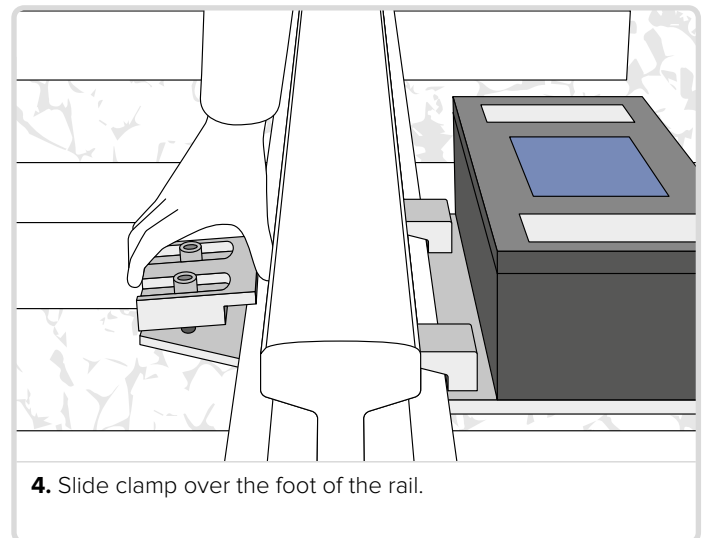
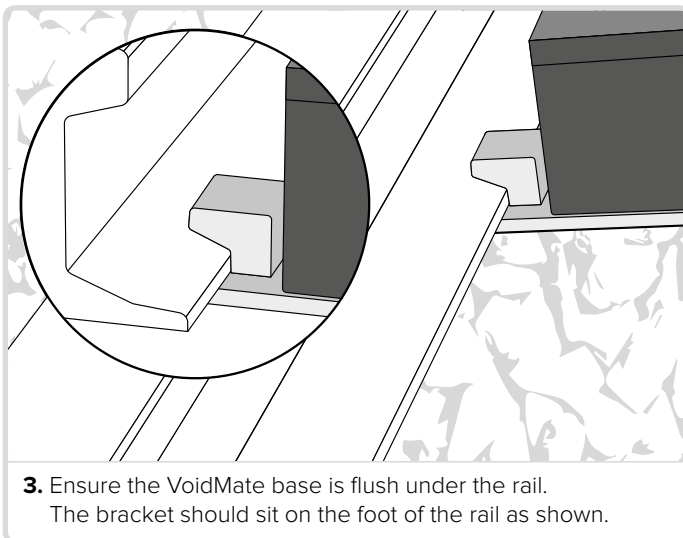
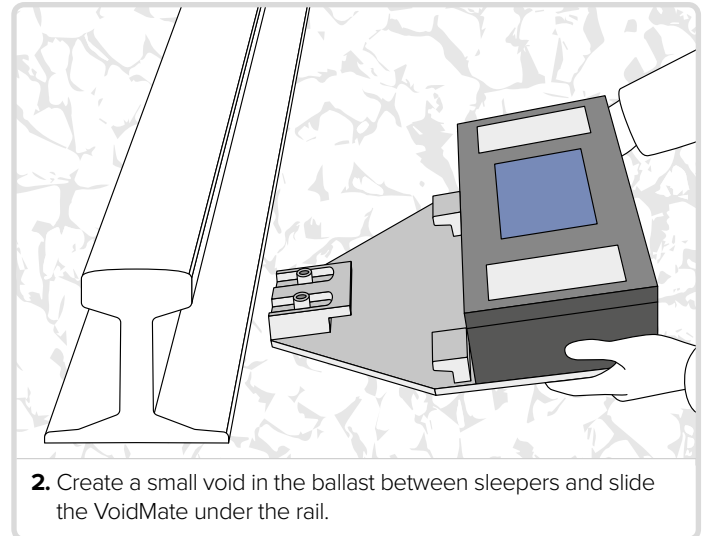
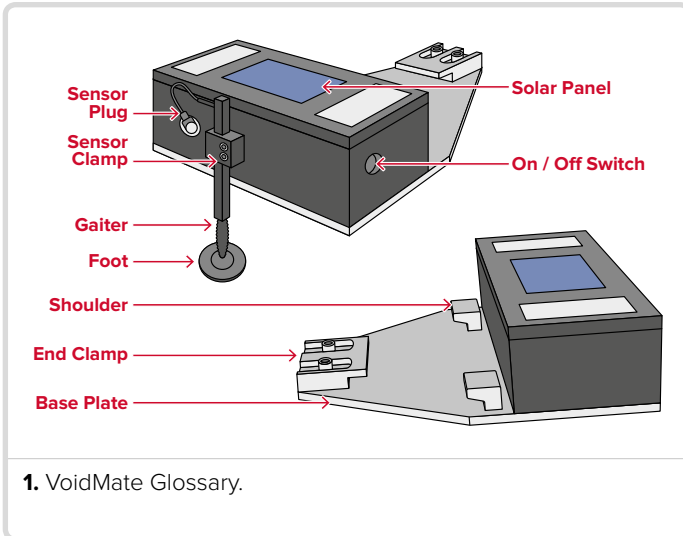
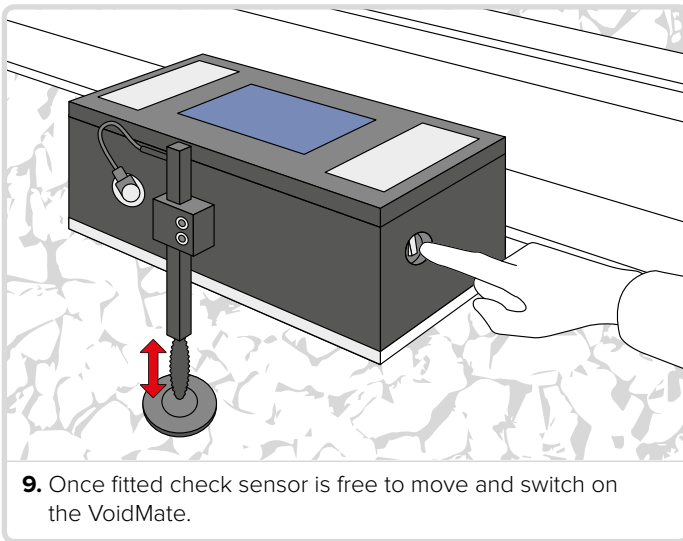
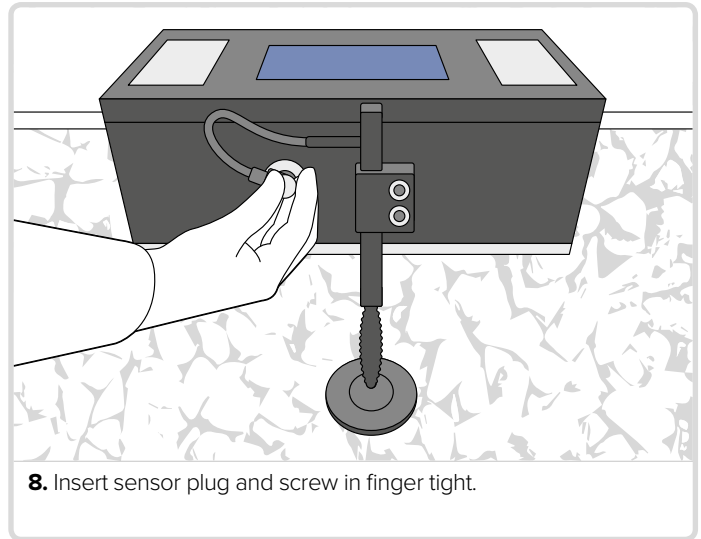
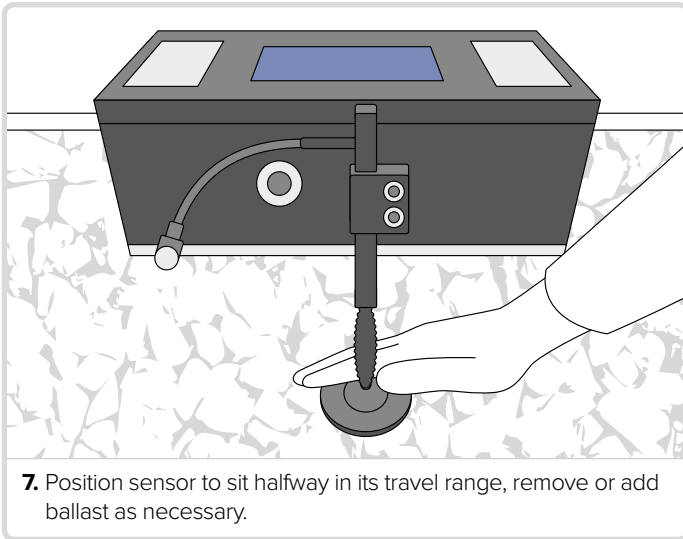




VoidMate

TRACK VOID MONITOR

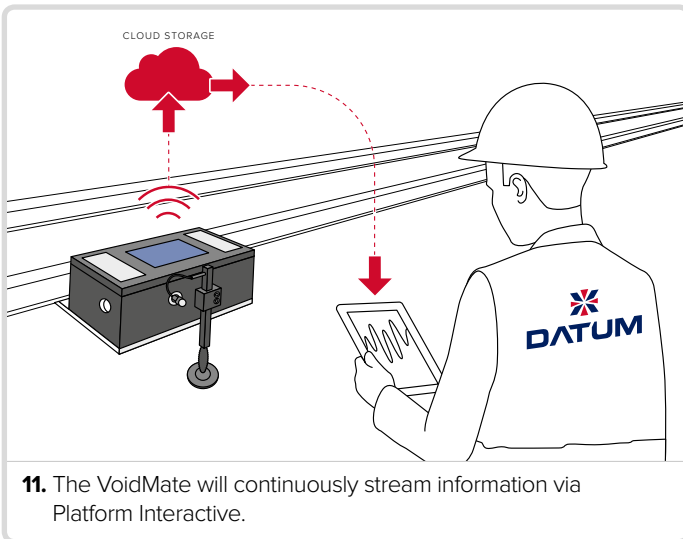




**Call Datum
24/7 Helpline:
0845 600 2511**

- Serial Number
- Company Name
- Site Location
- Alarm Limit
- Alarm Recipients

10. Call Datum 24/7 Helpline to ensure device is connected. Provide them with the information listed.



Removing the VoidMate

1. Switch off the VoidMate.
2. Fully unscrew sensor plug.
3. Loosen sensor clamp and detach from VoidMate.
4. Loosen and open the end clamp.
5. Remove the Voidmate.

CONTACT DETAILS

Head Office
Datum House
The Pavilions
Bridge Hall Lane
Bury, Lancashire
United Kingdom
BL9 7NX

- +44 (0) 161 797 5511
- info@datummonitoring.com
- www.datummonitoring.com
- @TheDATUMGroup
- @DatumMonitoring

